



SISEP

State Implementation and Scaling-up
of Evidence-based Practices

February
2018
SISEP eNote

Insights for Developing District Implementation Teams

Developing a District Implementation Team requires time and the knowledge and skills to support the use of [Active Implementation](#) practices. SISEP recently compiled several lessons learned from our work with districts as they developed their capacity to support the use of effective and sustainable innovations in classrooms.

**Take a minute to consider a few of these insights when working with districts.
More to come in future eNotes.**



Exploration

Identify needs as well as successes a district is facing in order to select an innovation that will get the attention and allocation of time and resources it requires.

Align the selected innovation with any district and school improvement plans.

“Why is it working for us? I truly believe it’s because we spent the year planning before rolling it out.”

- School Administrator in MA



Leadership

Ensure Executive Leadership is committed and engaged to legitimize the new way of work. The **influence of a superintendent** – their visibility and continuous support – impacts this work.

Usable Innovations

The various “**innovations**” required **by the state need to have clear definitions of core elements** so they can be understood by the DIT.

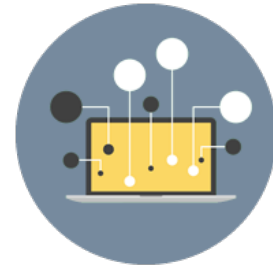
Teams



Review what teams exist at the district and building level before creating District and Building Implementation Teams. With small districts, the same people tend to do it all. **Consider repurposing existing teams or using a subset** of that entity to do the work of implementation and communicate with the larger team.

Data

Model use of data for decision making from the beginning. Support the development of an easy to use data system that will be used frequently (e.g., at least monthly).



“We are much more focused and I would like to say I feel so fortunate to be part of this work. I know we are going to build teachers’ capacity, but not only are we going to build it, we are going to be able to sustain it.”

- School Administrator in KY



Resources

[District Implementation Team \(DIT\) Handout](#)

[Implementation Team Look Fors: Implementation Team Meeting](#)

[Implementation Team Checklist](#)

ACCESS MORE ON THE AIHUB



State Implementation and Scaling-up
of Evidence-based Practices

[FIND OUT MORE](#)

